

BRIGHTFIELD ILLUMINATION DIGITAL PHOTO OF *B. oleae* AND GUT CONTENTS

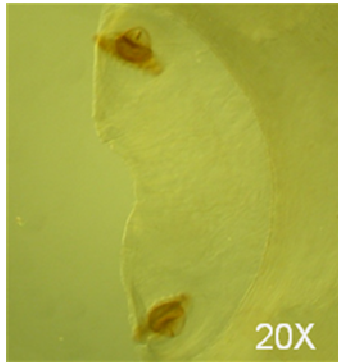


Photo 1- *B. oleae* anterior larval spiracles

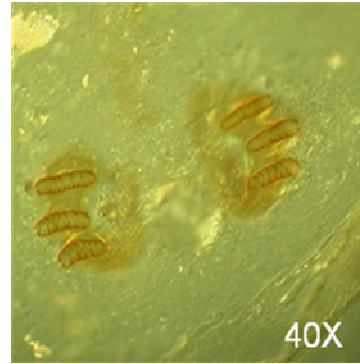


Photo 2- *B. oleae* posterior larval spiracles

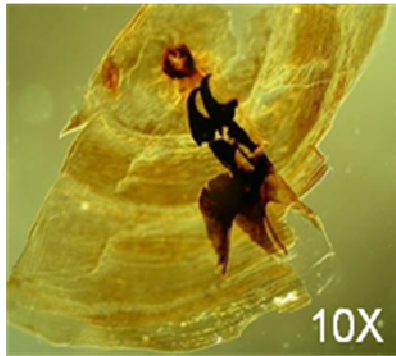


Photo 3- *B. oleae* larval mouth parts

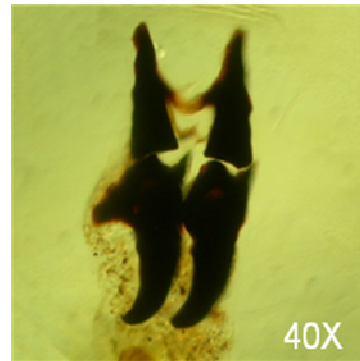


Photo 4- *B. oleae* larval mouth parts

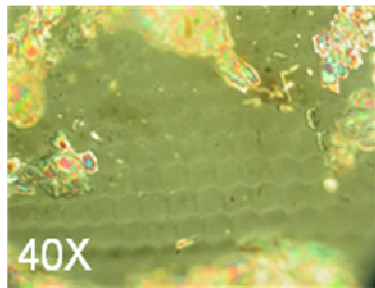


Photo 5- *B. oleae* ommatidia



Photo 6- *B. oleae* ommatidium into *C. fuscipes* gut

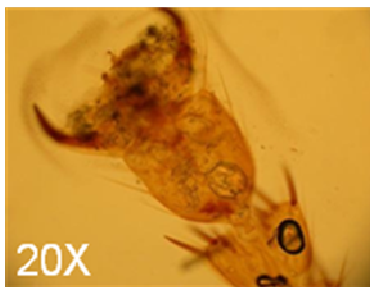


Photo 7- *B. oleae* tarsomere

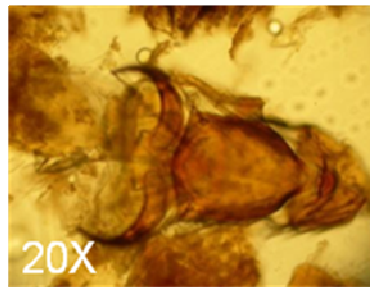


Photo 8- *B. oleae* tarsomere into *C. fuscipes* gut



Photo 9- *B. oleae* tarsomere



Photo 10 -*B. oleae* tarsomere into *C. fuscipes* gut

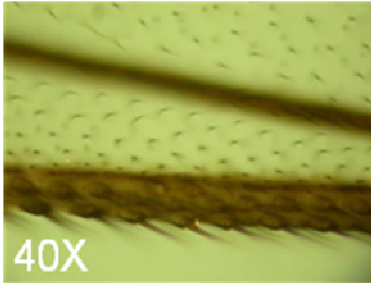


Photo 11.12- *B. oleae* wing

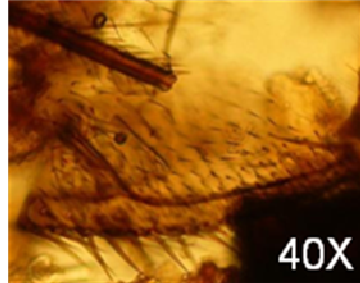


Photo 13-14- *B. oleae* wing into *C. fuscipes* gut

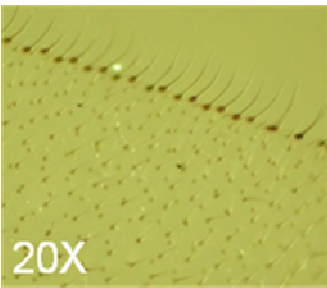


Photo 15-16-*B. oleae* abdominal cuticle

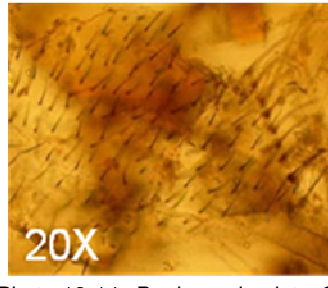


Photo 17-18- *B. oleae* abdominal cuticle into *C. fuscipes* gut

