

BRIGHTFIELD ILLUMINATION DIGITAL PHOTO OF GUT CONTENTS OF CARABID BEETLES *P. melas* AND *C. fuscipes*

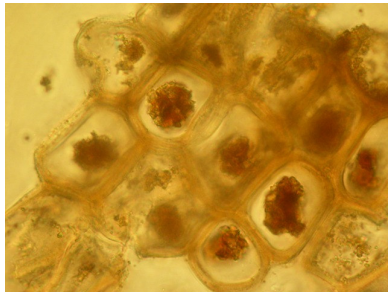


Photo 17-Vegetal cells (40x) into *C. fuscipes* gut contents

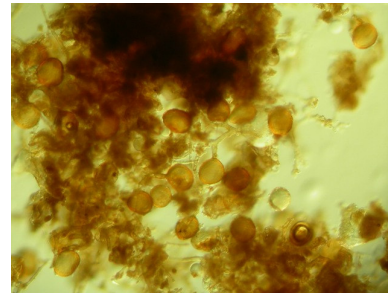


Photo 18- Fungal spores (10x) into *P. melas* gut contents



Photo 19- Prey ommatidia (20x) into *C. fuscipes* gut contents



Photo 20- Earthworm cheta (20x) into *P. melas* gut contents



Photo 21-Larva (5x) into *C. fuscipes* gut contents

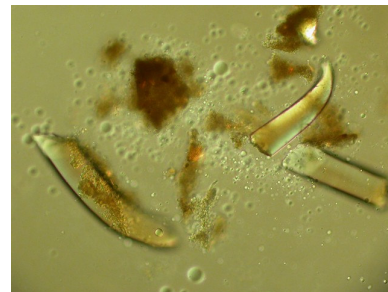


Photo 22- Earthworm chetae (20x) into *C. fuscipes* gut

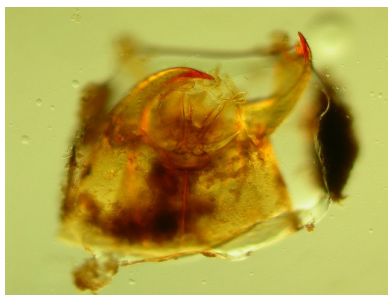


Photo 23- Beetles larva head (10x) into *P. melas* gut contents



Photo 24- Mites (20x) into *P. melas* gut contents